

## Lower Rio Grande Workforce Development Area

March 2021



WDA Labor Force Statistics				
	Mar-21	Feb-21	Mar-20	Yearly Change
Civilian Labor Force	397,943	399,689	392,128	5,815
Employed	351,300	349,579	354,448	-3,148
Unemployed	46,643	50,110	37,680	8,963
Unemployment Rate	11.7%	12.5%	9.6%	2.1%

Texas Labor Force Statistics				
	Mar-21	Feb-21	Mar-20	Yearly Change
Civilian Labor Force	14,096,630	14,047,933	13,953,661	142,969
Employed	13,086,898	12,989,157	13,248,772	-161,874
Unemployed	1,009,732	1,058,776	704,889	304,843
Unemployment Rate	7.2%	7.5%	5.1%	2.1%

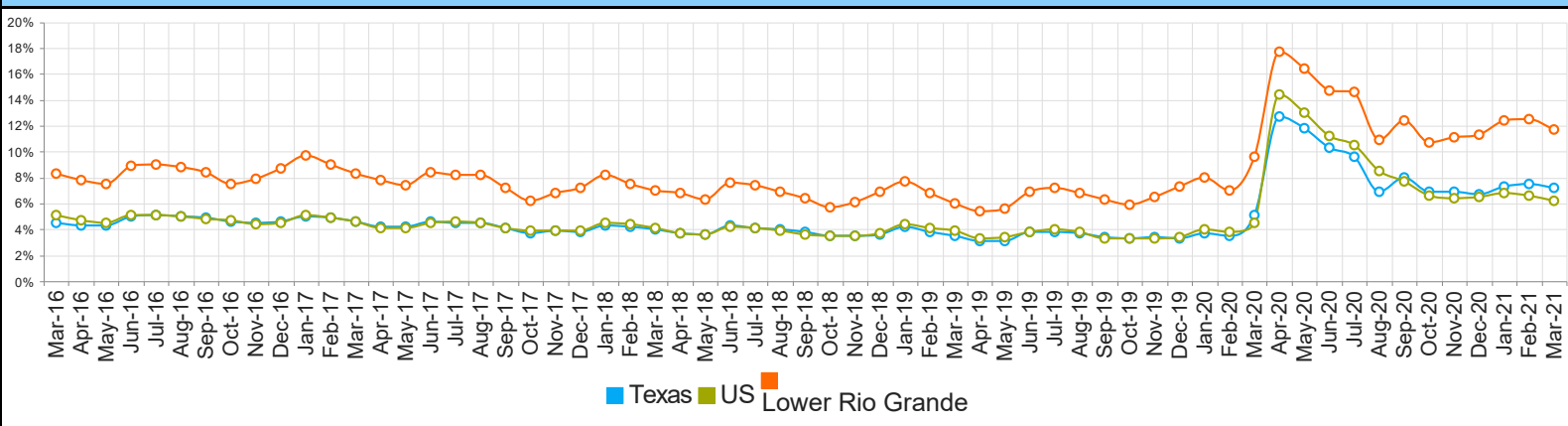
  

US Labor Force Statistics				
	Mar-21	Feb-21	Mar-20	Yearly Change
Civilian Labor Force	160,397,000	160,008,000	162,537,000	-2,140,000
Employed	150,493,000	149,522,000	155,167,000	-4,674,000
Unemployed	9,905,000	10,486,000	7,370,000	2,535,000
Unemployment Rate	6.2%	6.6%	4.5%	1.7%

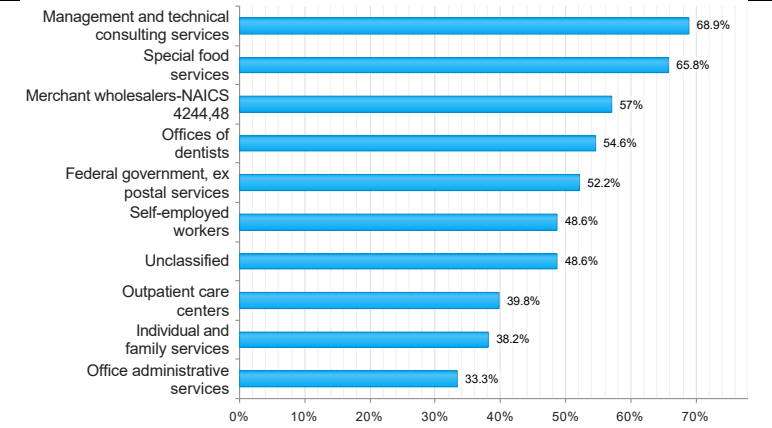
  

Continued Claims for the Week of the 12th				
	Mar-21	Feb-21	Mar-20	Yearly Change
WDA	11,031	12,799	9,468	1,563
Texas	204,996	221,149	124,065	80,931

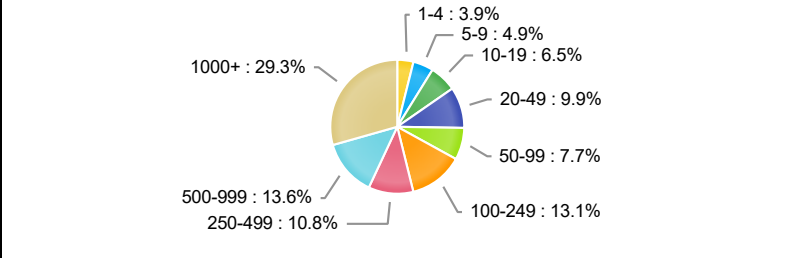
## Historical Unemployment Rates



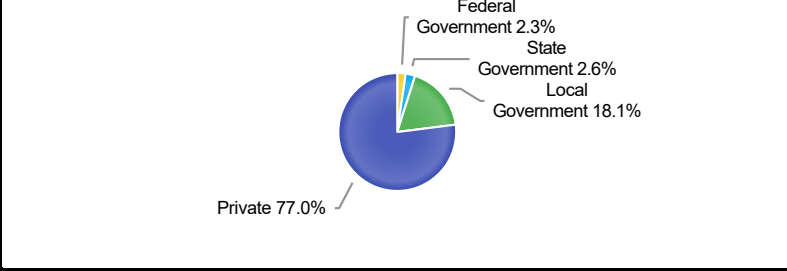
## Projected Top Ten Fastest Growing Industries in WDA (% Growth 2018-2028)



## Employment by Size Class (3rd Quarter 2020)



## Employment by Ownership (3rd Quarter 2020)

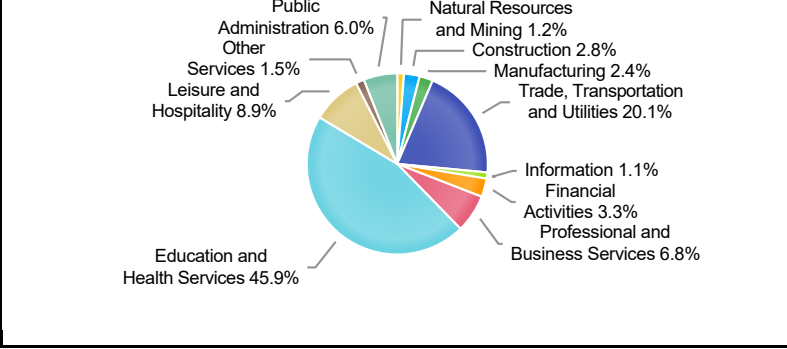


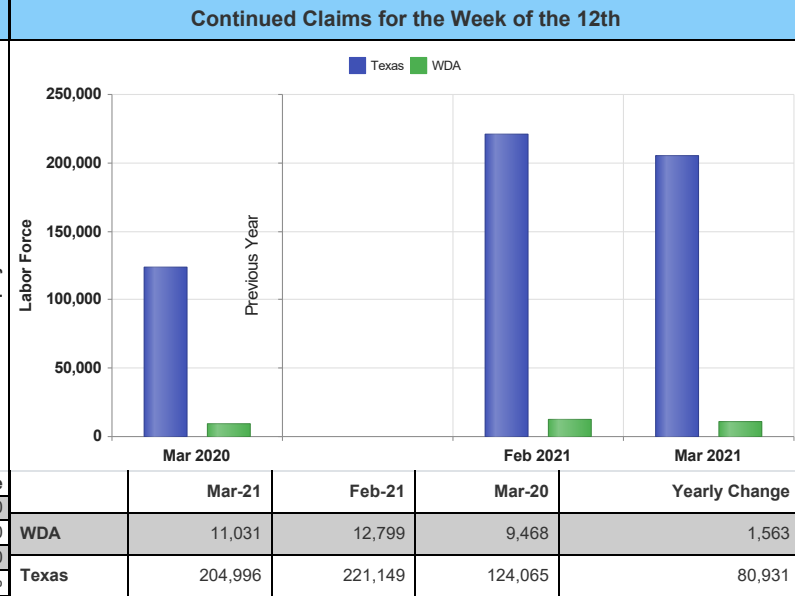
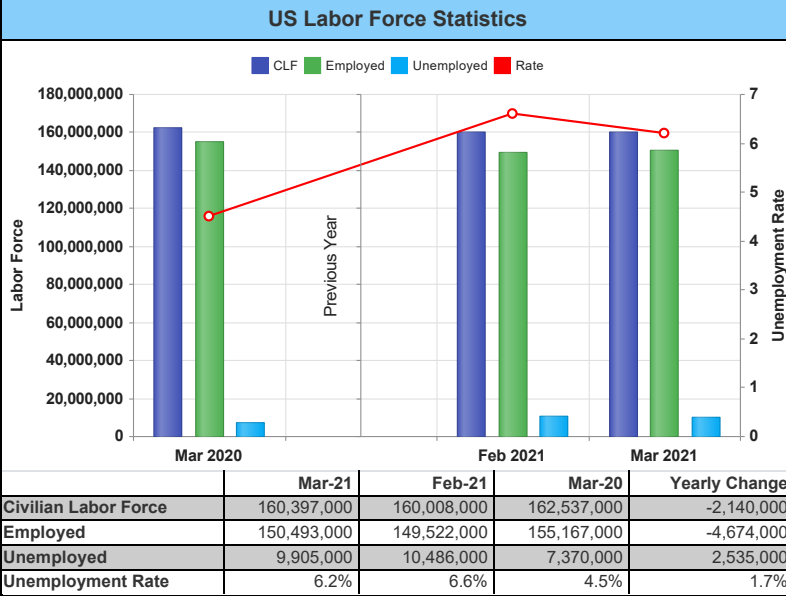
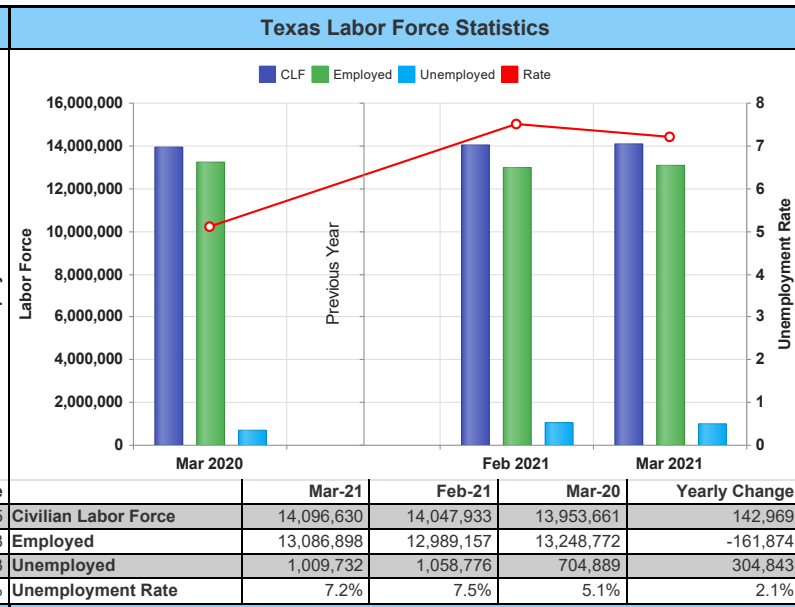
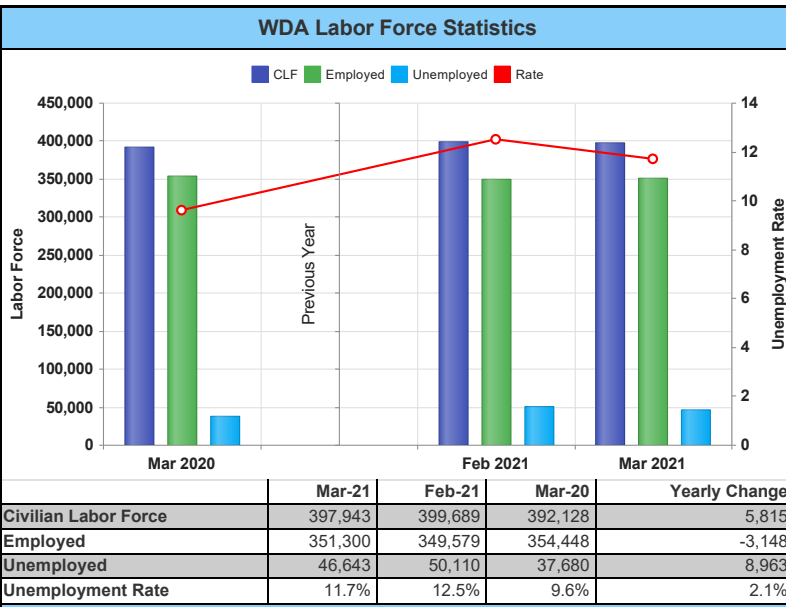
Average Weekly Wage (3rd Quarter 2020)					
	Q3 2020	Q2 2020	Q3 2019	Quarterly Change	Yearly Change
WDA	\$709	\$701	\$680	\$8	\$29
Texas	\$1,149	\$1,156	\$1,108	-\$7	\$41
US	\$1,173	\$1,188	\$1,092	-\$15	\$81

## Employment by Industry (3rd Quarter 2020, Percent Change)

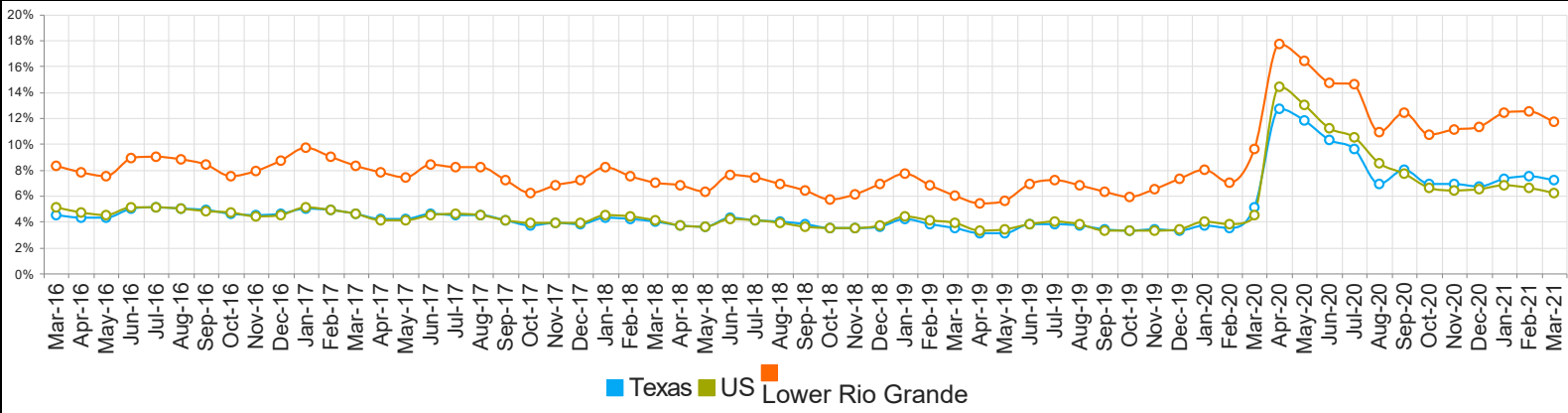
Industry	Employment	% of Total	% Quarterly Change	% Yearly Change
Natural Resources and Mining	3,222	1.2%	-24.7%	-23.7%
Construction	7,638	2.8%	0.5%	-7.5%
Manufacturing	6,582	2.4%	0.4%	-4.5%
Trade, Transportation and Utilities	54,147	20.1%	4.7%	-5.1%
Information	2,888	1.1%	1.1%	-11.6%
Financial Activities	8,920	3.3%	-2.1%	-2.9%
Professional and Business Services	18,166	6.8%	3.5%	1.2%
Education and Health Services	123,451	45.9%	-2.0%	-1.8%
Leisure and Hospitality	23,877	8.9%	7.6%	-18.9%
Other Services	4,129	1.5%	6.0%	-9.9%
Public Administration	16,023	6.0%	3.7%	4.4%

## Employment by Industry (3rd Quarter 2020)



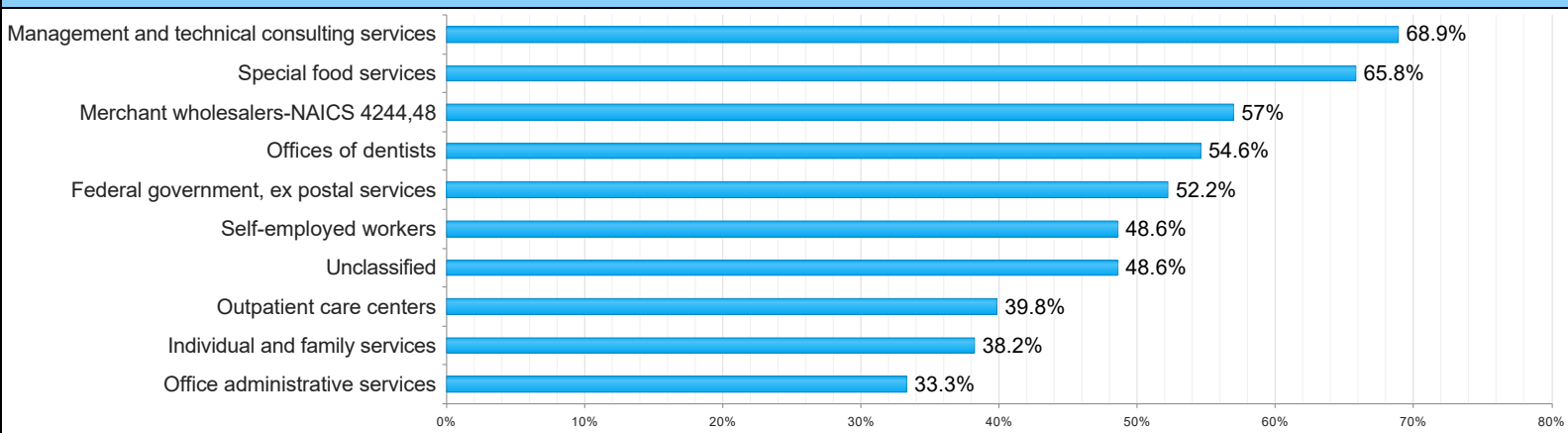


### Historical Unemployment Rates



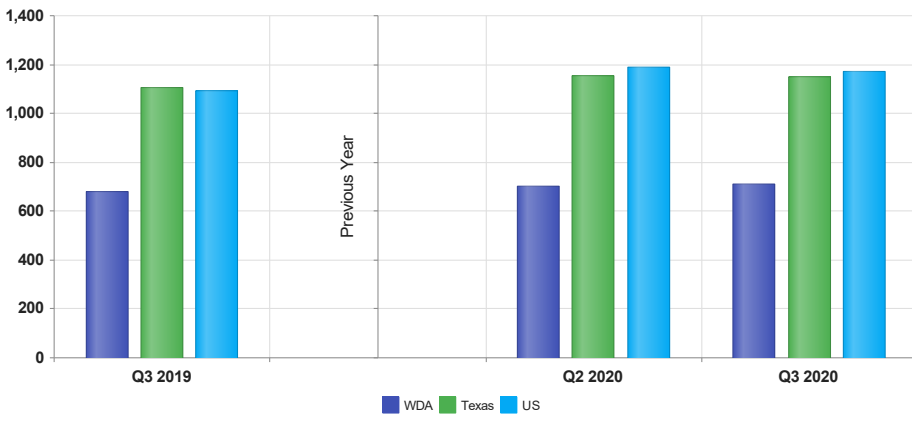
Months	WDA	Texas	US
Mar-21	11.7	7.2	6.2
Feb-21	12.5	7.5	6.6
Jan-21	12.4	7.3	6.8
Dec-20	11.3	6.7	6.5
Nov-20	11.1	6.9	6.4
Oct-20	10.7	6.9	6.6
Sep-20	12.4	8.0	7.7
Aug-20	10.9	6.9	8.5
Jul-20	14.6	9.6	10.5
Jun-20	14.7	10.3	11.2
May-20	16.4	11.8	13.0
Apr-20	17.7	12.7	14.4
Mar-20	9.6	5.1	4.5
Feb-20	7.0	3.5	3.8
Jan-20	8.0	3.7	4.0
Dec-19	7.3	3.3	3.4
Nov-19	6.5	3.4	3.3
Oct-19	5.9	3.3	3.3
Sep-19	6.3	3.4	3.3
Aug-19	6.8	3.7	3.8
Jul-19	7.2	3.8	4.0
Jun-19	6.9	3.8	3.8
May-19	5.6	3.1	3.4
Apr-19	5.4	3.1	3.3
Mar-19	6.0	3.5	3.9
Feb-19	6.8	3.8	4.1
Jan-19	7.7	4.2	4.4
Dec-18	6.9	3.6	3.7
Nov-18	6.1	3.5	3.5
Oct-18	5.7	3.5	3.5
Sep-18	6.4	3.8	3.6
Aug-18	6.9	4.0	3.9
Jul-18	7.4	4.1	4.1
Jun-18	7.6	4.3	4.2
May-18	6.3	3.6	3.6
Apr-18	6.8	3.7	3.7
Mar-18	7.0	4.0	4.1
Feb-18	7.5	4.2	4.4
Jan-18	8.2	4.3	4.5
Dec-17	7.2	3.8	3.9
Nov-17	6.8	3.9	3.9
Oct-17	6.2	3.7	3.9
Sep-17	7.2	4.1	4.1
Aug-17	8.2	4.5	4.5
Jul-17	8.2	4.5	4.6
Jun-17	8.4	4.6	4.5
May-17	7.4	4.2	4.1
Apr-17	7.8	4.2	4.1
Mar-17	8.3	4.6	4.6
Feb-17	9.0	4.9	4.9
Jan-17	9.7	5.0	5.1
Dec-16	8.7	4.6	4.5
Nov-16	7.9	4.5	4.4
Oct-16	7.5	4.6	4.7
Sep-16	8.4	4.9	4.8
Aug-16	8.8	5.0	5.0
Jul-16	9.0	5.1	5.1
Jun-16	8.9	5.0	5.1
May-16	7.5	4.3	4.5
Apr-16	7.8	4.3	4.7
Mar-16	8.3	4.5	5.1

**Projected Top Ten Fastest Growing Industries in WDA (% Growth 2018-2028)**



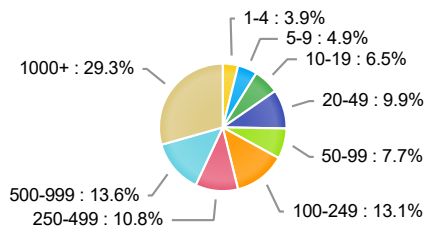
Industry Title	Percent Change
Management and technical consulting services	68.9
Special food services	65.8
Merchant wholesalers-NAICS 4244,48	57
Offices of dentists	54.6
Federal government, ex postal services	52.2
Self-employed workers	48.6
Unclassified	48.6
Outpatient care centers	39.8
Individual and family services	38.2
Office administrative services	33.3

### Average Weekly Wage (3rd Quarter 2020)



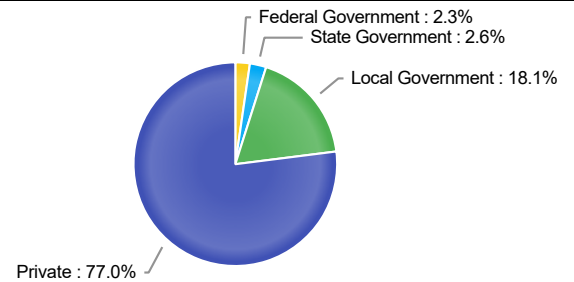
	Q3 2020	Q2 2020	Q3 2019	Quarterly Change	Yearly Change
WDA	\$709	\$701	\$680	\$8	\$29
Texas	\$1,149	\$1,156	\$1,108	\$-7	\$41
US	\$1,173	\$1,188	\$1,092	\$-15	\$81

### Employment by Size Class (3rd Quarter 2020)



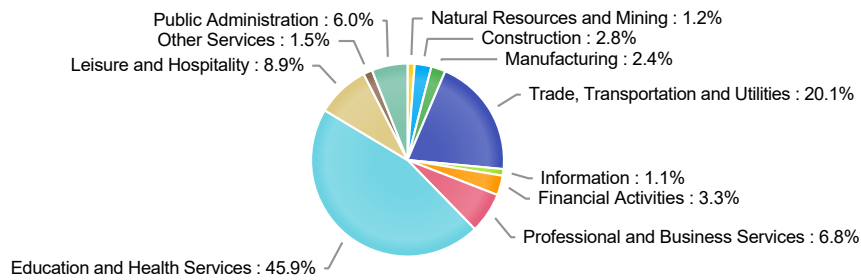
Number of Employees in Firm	Percentage
1-4	3.9%
5-9	4.9%
10-19	6.5%
20-49	9.9%
50-99	7.7%
100-249	13.1%
250-499	10.8%
500-999	13.6%
1000+	29.3%

### Employment by Ownership (3rd Quarter 2020)



Ownership	Percentage
Federal Government	2.3%
State Government	2.6%
Local Government	18.1%
Private	77.0%

### Employment by Industry (3rd Quarter 2020)



Industry	Q3 2020 Employment	% of Total	Q2 2020 Employment	% of Total	Q3 2019 Employment	% of Total	Quarterly Change	Yearly Change
Natural Resources and Mining	3,222	1.2%	4,281	1.6%	4,225	1.5%	-24.7%	-23.7%
Construction	7,638	2.8%	7,600	2.8%	8,259	2.9%	0.5%	-7.5%
Manufacturing	6,582	2.4%	6,559	2.5%	6,891	2.4%	0.4%	-4.5%
Trade, Transportation and Utilities	54,147	20.1%	51,710	19.4%	57,076	20.2%	4.7%	-5.1%
Information	2,888	1.1%	2,857	1.1%	3,266	1.2%	1.1%	-11.6%
Financial Activities	8,920	3.3%	9,109	3.4%	9,183	3.3%	-2.1%	-2.9%
Professional and Business Services	18,166	6.8%	17,553	6.6%	17,956	6.4%	3.5%	1.2%
Education and Health Services	123,451	45.9%	125,996	47.2%	125,776	44.6%	-2.0%	-1.8%
Leisure and Hospitality	23,877	8.9%	22,182	8.3%	29,425	10.4%	7.6%	-18.9%
Other Services	4,129	1.5%	3,896	1.5%	4,582	1.6%	6.0%	-9.9%
Public Administration	16,023	6.0%	15,444	5.8%	15,343	5.4%	3.7%	4.4%