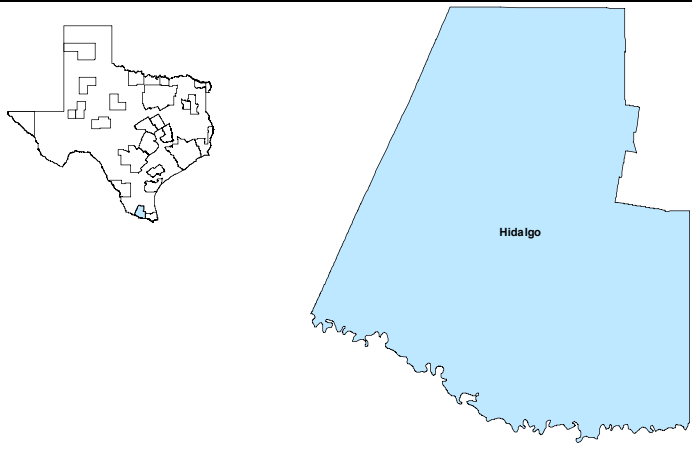


McAllen-Edinburg-Mission MSA

March 2019

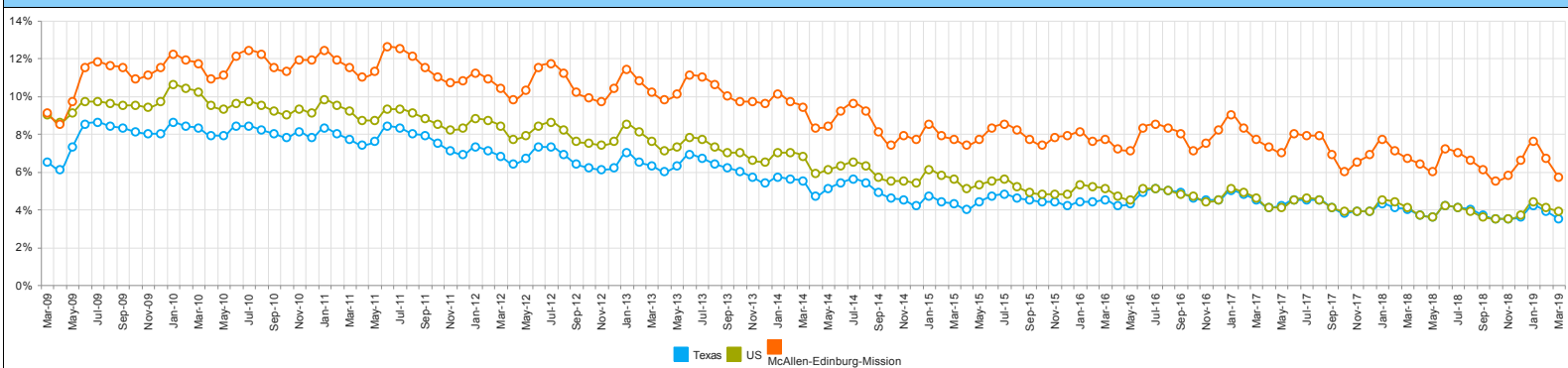


MSA Labor Force Statistics				
	Mar-19	Feb-19	Mar-18	Yearly Change
Civilian Labor Force	355,777	357,323	352,540	3,237
Employed	335,512	333,373	328,885	6,627
Unemployed	20,265	23,950	23,655	-3,390
Unemployment Rate	5.7%	6.7%	6.7%	-1.0%

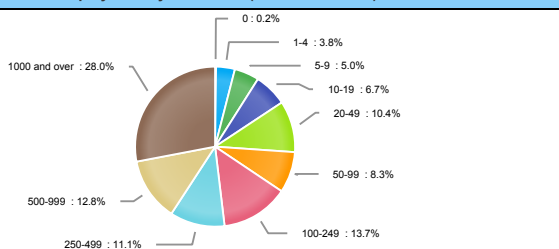
Texas Labor Force Statistics				
	Mar-19	Feb-19	Mar-18	Yearly Change
Civilian Labor Force	14,059,553	14,086,922	13,818,674	240,879
Employed	13,564,857	13,537,993	13,262,592	302,265
Unemployed	494,696	548,929	556,082	-61,386
Unemployment Rate	3.5%	3.9%	4.0%	-0.5%

US Labor Force Statistics				
	Mar-19	Feb-19	Mar-18	Yearly Change
Civilian Labor Force	162,823,000	162,793,000	161,548,000	1,275,000
Employed	156,441,000	156,167,000	154,877,000	1,564,000
Unemployed	6,382,000	6,625,000	6,671,000	-289,000
Unemployment Rate	3.9%	4.1%	4.1%	-0.2%

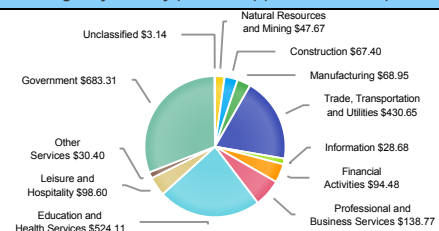
Historical Unemployment Rates



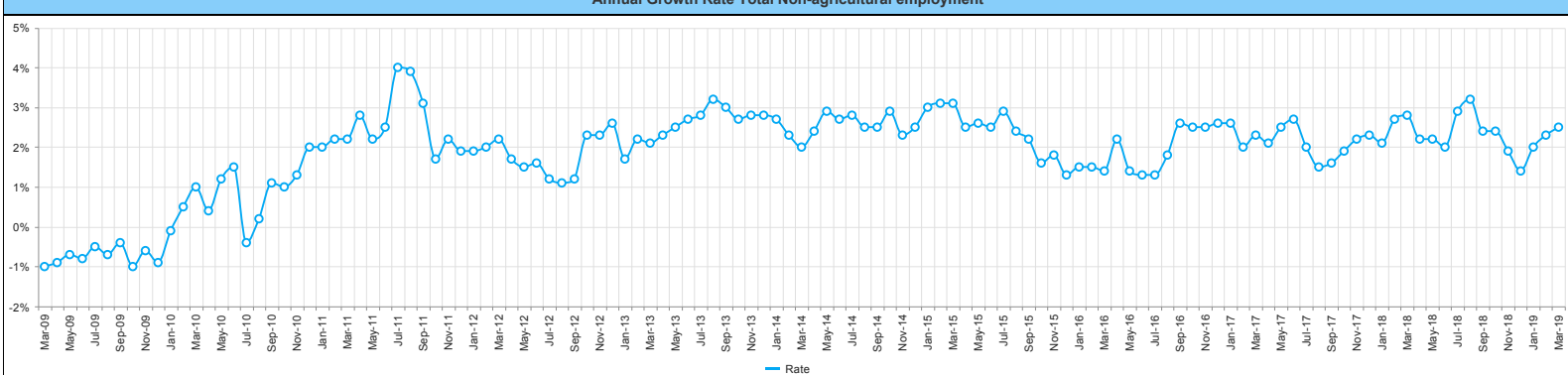
Employment by Size Class (3rd Quarter 2018)



Wages by Industry (in millions) (3rd Quarter 2018)



Annual Growth Rate Total Non-agricultural employment



Employment by Industry (March 2019)

Industry	Current Month Employment	% Monthly Change	% Yearly Change
Total Nonfarm	271,400	0.9%	2.5%
Mining, Logging and Construction	8,300	0.0%	-1.2%
Manufacturing	7,200	-1.4%	1.4%
Trade, Transportation, and Utilities	54,000	0.7%	1.5%
Information	2,800	0.0%	-3.4%
Financial Activities	9,000	0.0%	1.1%
Professional and Business Services	17,500	0.6%	-3.3%
Education and Health Services	78,900	1.5%	7.2%
Leisure and Hospitality	25,900	2.0%	0.4%
Other Services	5,700	-1.7%	1.8%
Government	62,100	0.6%	1.5%

Employment by Industry (March 2019)

