

Lower Rio Grande Workforce Development Area

November 2019



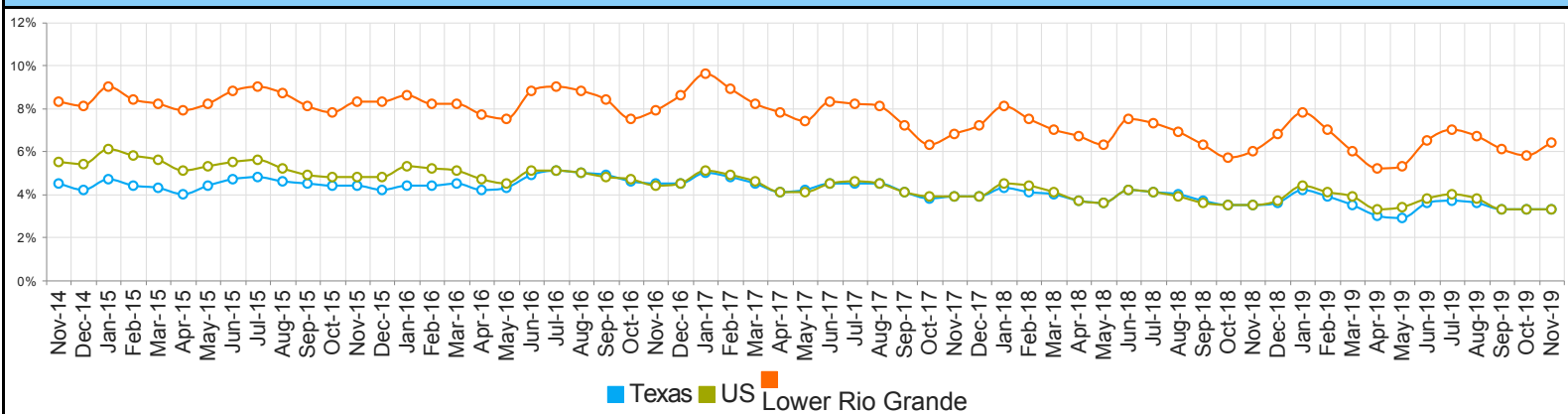
WDA Labor Force Statistics				
	Nov-19	Oct-19	Nov-18	Yearly Change
Civilian Labor Force	390,301	386,689	379,855	10,446
Employed	365,163	364,084	357,062	8,101
Unemployed	25,138	22,605	22,793	2,345
Unemployment Rate	6.4%	5.8%	6.0%	0.4%

Texas Labor Force Statistics				
	Nov-19	Oct-19	Nov-18	Yearly Change
Civilian Labor Force	14,265,562	14,190,783	13,961,940	303,622
Employed	13,788,541	13,723,103	13,475,980	312,561
Unemployed	477,021	467,680	485,960	-8,939
Unemployment Rate	3.3%	3.3%	3.5%	-0.2%

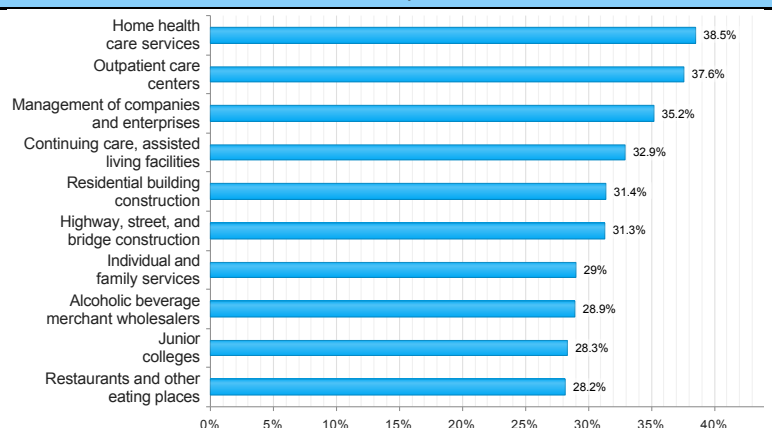
US Labor Force Statistics				
	Nov-19	Oct-19	Nov-18	Yearly Change
Civilian Labor Force	164,386,000	164,576,000	162,665,000	1,721,000
Employed	158,945,000	159,067,000	157,015,000	1,930,000
Unemployed	5,441,000	5,510,000	5,650,000	-209,000
Unemployment Rate	3.3%	3.3%	3.5%	-0.2%

Continued Claims for the Week of the 12th				
	Nov-19	Oct-19	Nov-18	Yearly Change
WDA	6,875	5,357	5,283	1,592
Texas	93,207	89,985	83,685	9,522

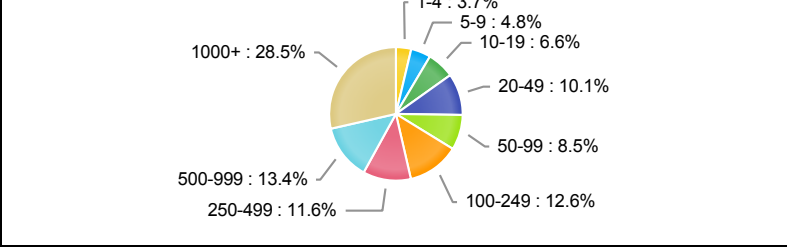
Historical Unemployment Rates



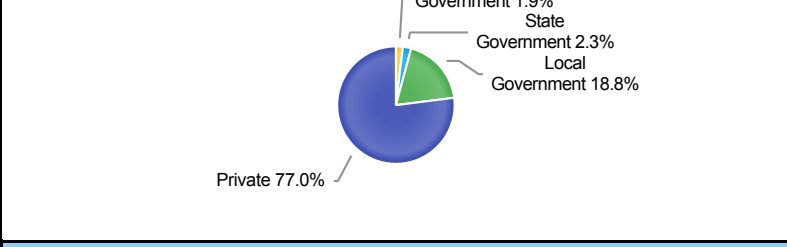
Projected Top Ten Fastest Growing Industries in WDA (% Growth 2016-2026)



Employment by Size Class (2nd Quarter 2019)



Employment by Ownership (2nd Quarter 2019)



Average Weekly Wage (2nd Quarter 2019)

	Q2 2019	Q1 2019	Q2 2018	Quarterly Change	Yearly Change
WDA	\$654	\$659	\$641	\$-5	\$13
Texas	\$1,102	\$1,204	\$1,062	\$-102	\$40
US	\$1,095	\$1,184	\$1,055	\$-89	\$40

Employment by Industry (2nd Quarter 2019, Percent Change)

Industry	Employment	% of Total	% Quarterly Change	% Yearly Change
Natural Resources and Mining	4,964	1.7%	-2.5%	-1.9%
Construction	8,095	2.8%	3.0%	2.0%
Manufacturing	6,899	2.4%	-4.6%	-1.6%
Trade, Transportation and Utilities	57,094	20.0%	0.6%	0.4%
Information	3,340	1.2%	6.0%	1.3%
Financial Activities	9,109	3.2%	-2.0%	-2.4%
Professional and Business Services	17,953	6.3%	-3.3%	-0.7%
Education and Health Services	127,911	44.9%	0.7%	2.3%
Leisure and Hospitality	29,580	10.4%	4.6%	6.7%
Other Services	4,465	1.6%	1.8%	0.3%
Public Administration	15,574	5.5%	1.3%	-0.4%

Employment by Industry (2nd Quarter 2019)

